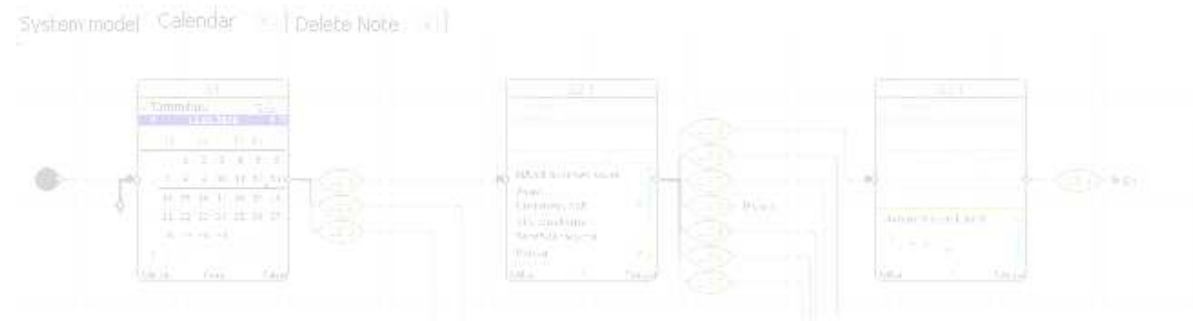


ATS4 AppModel Application Modeling Tool Introduction



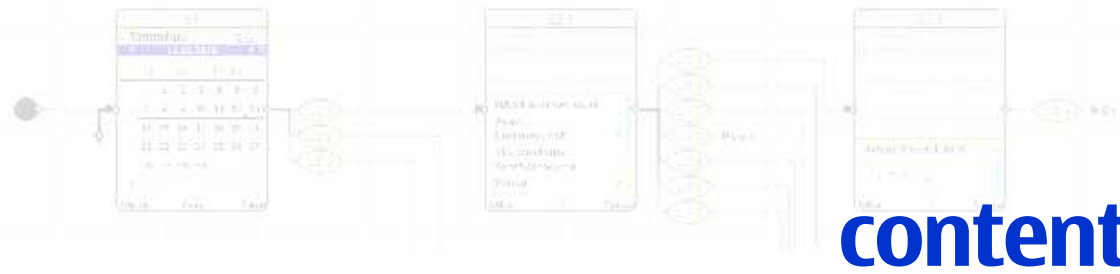
ATS4 AppModel has been developed based on following:

“Write executable specifications instead of requirements”

Implementing Lean Software Development

Mary and Tom Poppendieck, 2007





what is ATS4 AppModel tool
scope, goals
model designer view
test designer view
tester view
time it takes - S60 case





what is ATS4 AppModel

it is an SW application modelling tool

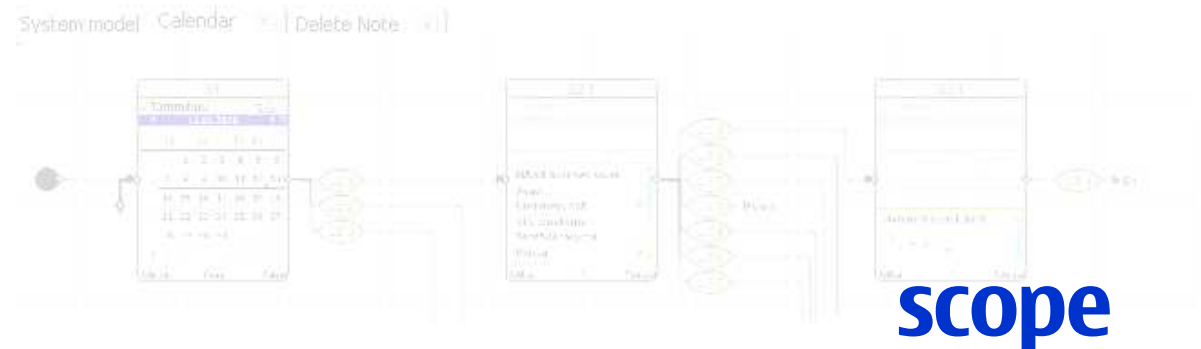
it supports application UI flow design and specification work

it supports application model simulation

it supports model based testing

it is part of ATS tool family, the first one open sourced 5/2009

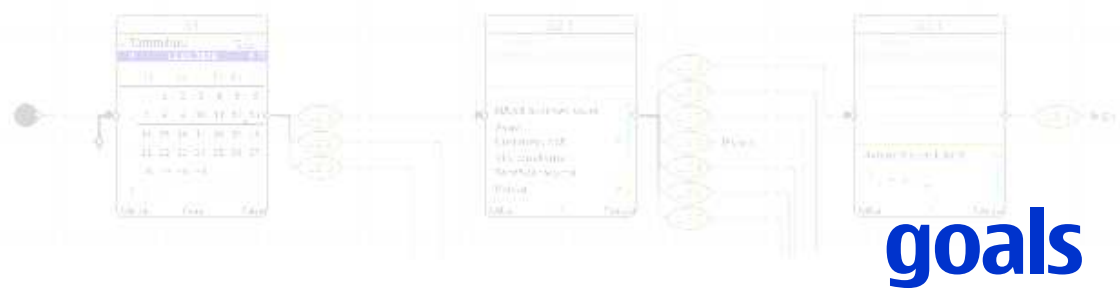
ATS4 AppModel is based on Nokia internal "KENDO" project 2004-2009



ATS4 AppModel is
designing and documenting UI flows – use case design
test case design tool
test automation script generator

ATS4 AppModel is NOT
a test engine i.e. it does not interact directly
with the device or application being tested

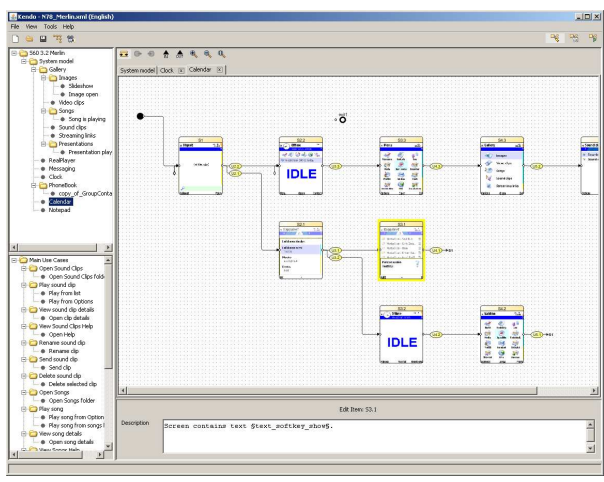




goals

graphical application model

generate UI/test specification



application model specification - user and system event descriptions

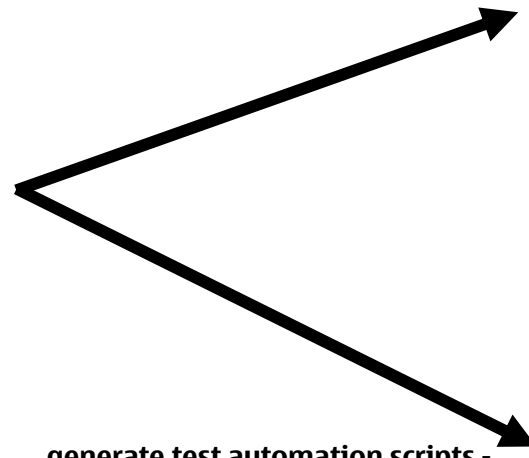
NOKIA
OutSolve

Test Specification: Calendar

Play from Options

Steps

Step Name	Description	Expected
Step 1	Send clip is open select menu Test	Test clip is selected.
Step 2	Press softkey [Options] [test_software_options]	Options menu is open.
Step 3	Select menu [Play] [test_software_play]	Send clip is playing Left softkey is [Options] [test_software_options] Middle softkey is [Play] [test_software_play] Right softkey is [Back] [test_software_back]



generate test automation scripts - send scripts to test execution tool

```

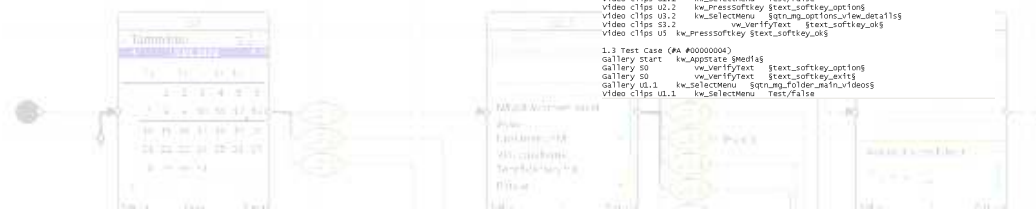
ASTC test script generated by Kendo (v.2008-10-01 dev) on 2008-09-30 13:08:17 (+0300)

1.0 Test Case (PA #00000003)
gallery start kw_Appotate [media]
gallery 50 vw_VerifyText $text_softkey_options
gallery 50 vw_VerifyText $text_softkey_ok15
gallery id.1 kw_SelectMenu $getn_mg_folder_main_videos
video clips u1.1 kw_SelectMenu Test/false
video clips u2.1 kw_PressSoftkey $getn_msk_alays
realplayer u3 kw_MsTime 0
realplayer u4 kw_PressSoftkey $text_softkey_back

1.1 Test Case (PA #00000002)
gallery start kw_Appotate [media]
gallery 50 vw_VerifyText $text_softkey_options
gallery 50 vw_VerifyText $text_softkey_ok15
gallery id.1 kw_SelectMenu $getn_mg_folder_main_videos
video clips u1.1 kw_SelectMenu Test/false
video clips u2.1 kw_PressSoftkey $text_softkey_options
video clips u3.1 vw_VerifyText $text_softkey_options
video clips u3.2 vw_VerifyText $text_softkey_close
video clips u4 kw_PressSoftkey $text_softkey_close

1.2 Test Case (PA #00000003)
gallery start kw_Appotate [media]
gallery 50 vw_VerifyText $text_softkey_options
gallery 50 vw_VerifyText $text_softkey_ok15
gallery id.1 kw_SelectMenu $getn_mg_folder_main_videos
video clips u1.1 kw_SelectMenu Test/false
video clips u2.1 kw_PressSoftkey $text_softkey_options
video clips u3.1 vw_VerifyText $text_softkey_options
video clips u3.2 vw_VerifyText $text_softkey_ok5
video clips u4 kw_PressSoftkey $text_softkey_ok5

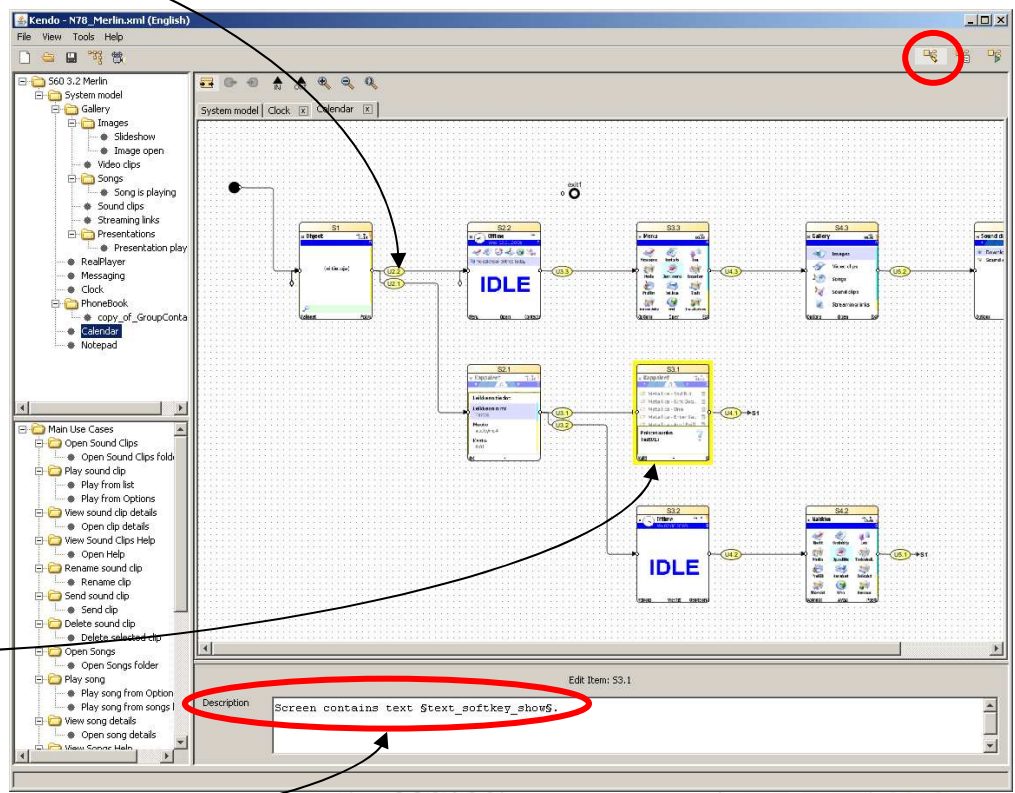
1.3 Test Case (PA #00000004)
gallery start kw_Appotate [media]
gallery 50 vw_VerifyText $text_softkey_options
gallery 50 vw_VerifyText $text_softkey_ok15
gallery id.1 kw_SelectMenu $getn_mg_folder_main_videos
video clips u1.1 kw_SelectMenu Test/false
    
```





model designer view

user event - action



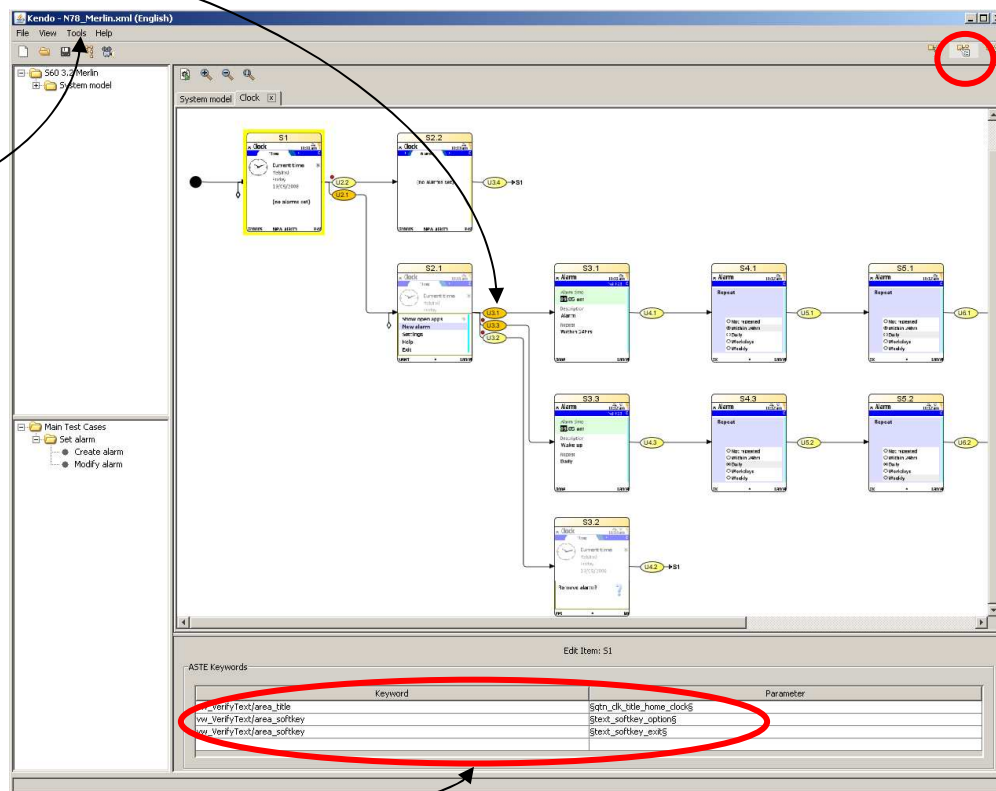
system event - verification step

Event description - specification

test designer view

dynamic flags -
runtime path selection

define test data -
used in any event



generated test automation
scripts for an event

tester view

Define/select test set

testing mode

test set content - test/use cases, app models

The screenshot shows the Kendo testing interface with the following components:

- Defined Test Sets:** A dropdown menu showing 'Clock Test Set (1 items)'.
- Selected Test Set:** A dropdown menu showing 'All paths (CPP)'.
- Items Table:** A table with columns: #, Name, Type, Repeats, Skip. It contains one row: 1, Clock, Application Model, 1, .
- Test Status:** A table with columns: TC name, Repetitions, Tester, Status, Target, Progress of TC.
- Test results:** A table with columns: TCF Name, Tester, Start Time, End Time, Elapsed time, Status. It contains four rows of test results.

send test set to test engine

test reports (when ATS4 Engine used)



time it takes – S60 case

Application	Modeling	Specification	Test Designer	Tester	Executing	Total	Total test cases
Browser	30	15	15	15	15	2h 0min	2
Calendar	140	120	120	30	20	7h 30min	35
Camera	75	60	45	30	15	4h 45min	228
Clock	120	60	130	30	30	7h 10min	19
Contacts	150	90	180	60	30	9h 15min	18
File Manager	30	15	30	15	15	2h 15min	3
Gallery	300	100	100	50	20	11h 30min	141
Landmarks	30	15	15	15	15	1h 45min	5
Settings	60	15	20	10	15	2h 30min	7
SMS	100	50	100	50	20	6h 20min	179
Voice Recorder	30	15	15	15	15	1h 45min	3
Total	1065	555	770	320	210	56h 45min	640
Average	97	50	70	29	19	5h 10min	
Median	75	50	45	30	15	4h 45min	

